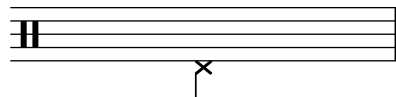
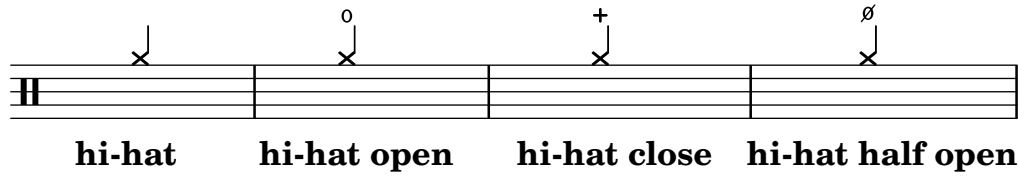


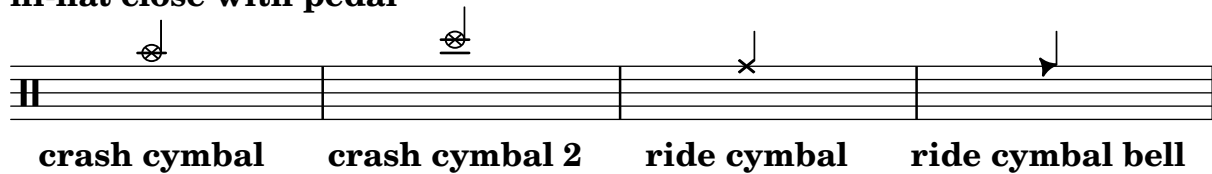
stoozdrums.com Notation Key for 3 Toms

All examples below show quarter notes. In the transcriptions, the noteheads, stems and flags reflect the duration of each note.

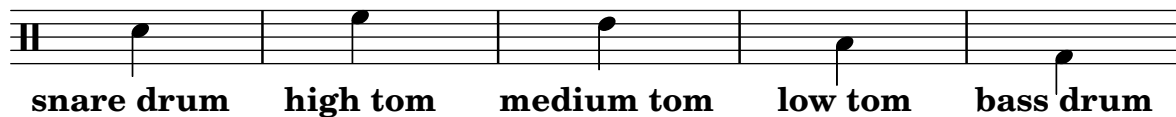
Cymbals are always written with x noteheads:



hi-hat close with pedal



Standard drum strokes are always written with traditional noteheads:



Dynamics. Although dynamics apply to all drums, the following examples show quarter notes on the snare drum. If the notehead type is written in the staff position of any other drum, the dynamic applies to that drum voice.



Additional percussion instruments use triangle-shaped noteheads. A cowbell uses this type of notehead to distinguish it from drum and cymbal notation. The stem may be down or up to prevent collision with other voices.

